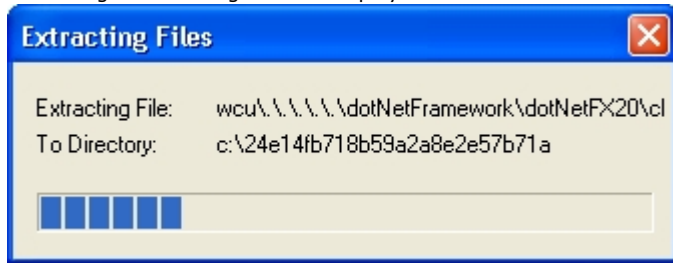


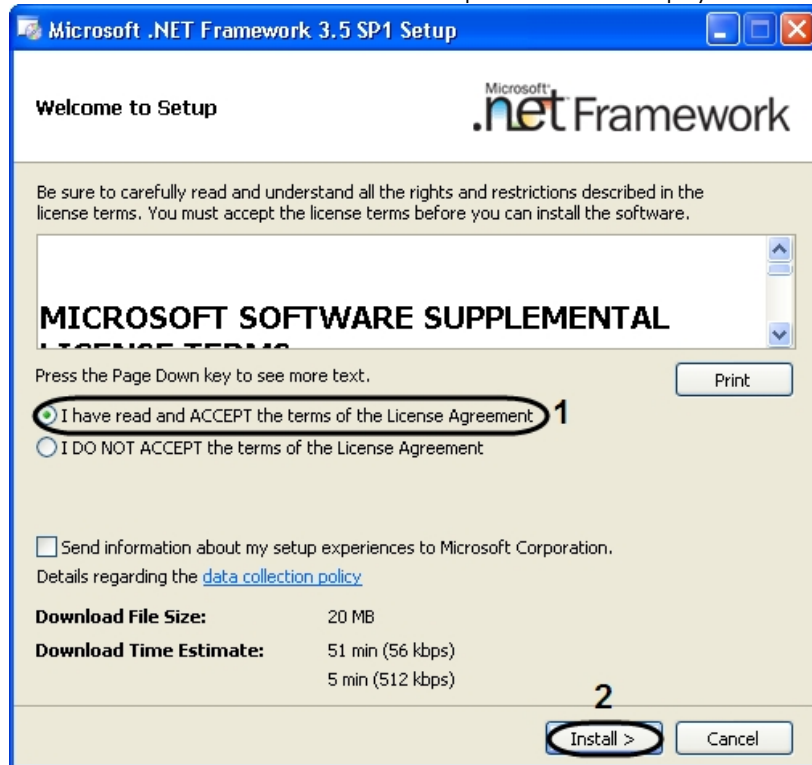
Appendix 4. Installing the Microsoft .NET Framework 3.5 SP1

To install Microsoft .NET Framework 3.5 SP1 manually do the following:

1. Install the Intellect as a server (see section [Installation of INTELLECT™ software as a Server](#)).
2. Run the Microsoft .NET Framework 3.5 SP1 setup from the folder `redist` of the Intellect setup program directory. For example: `C:\Intellect\redist\DotNet3.5\dotnetfx35.exe`.
3. Extracting files message will be displayed as a result.

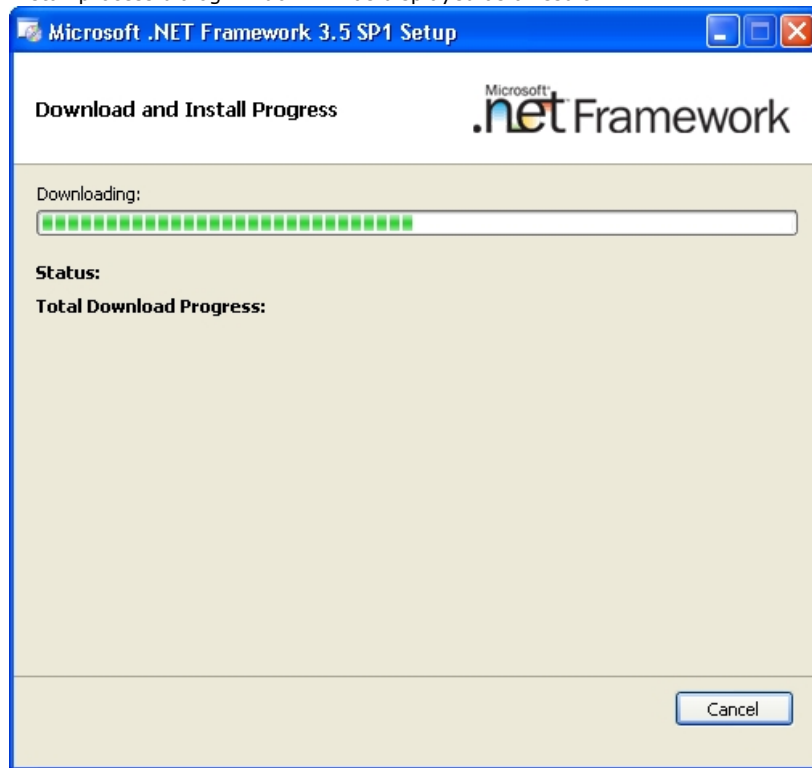


Then Microsoft .NET Framework 3.5 SP1 setup window will be displayed.

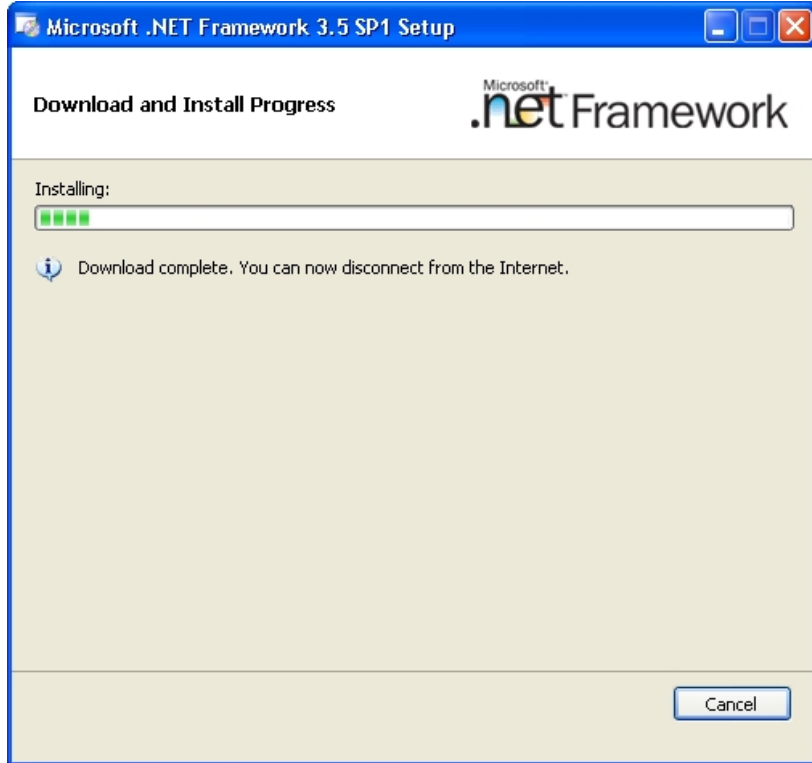


4. Confirm the acceptance of License Agreement terms by setting the switcher to the position **I have read and ACCEPT the terms of the License Agreement** after investigating the License Agreement terms, otherwise the setup will be cancelled (1).

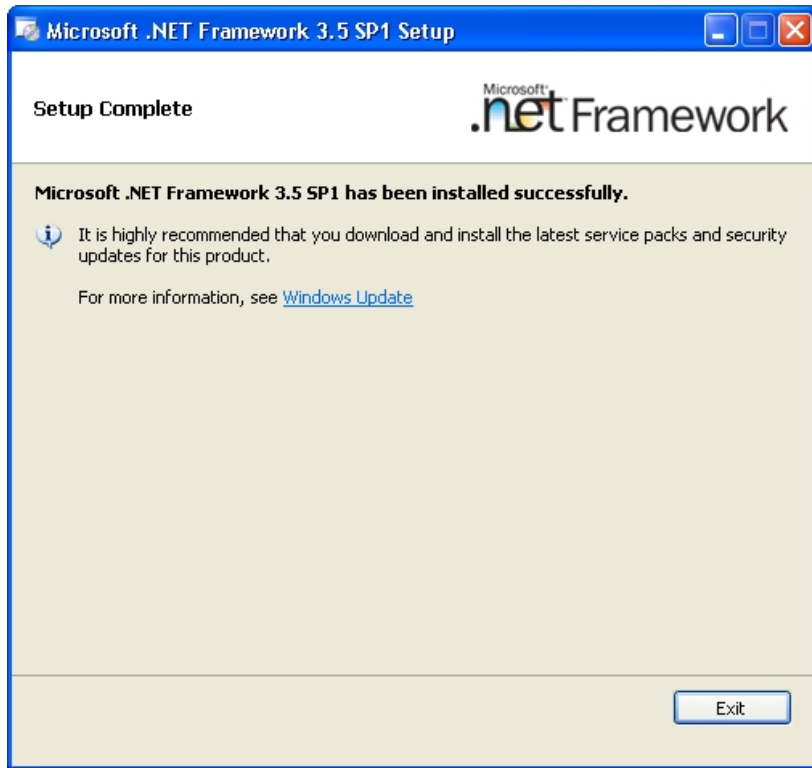
5. Click **Install>** (2).
Install process dialog window will be displayed as a result.



6. The **Download complete. You can now disconnect from the Internet** message will be displayed after finishing the download process.



Then the Microsoft .NET Framework 3.5 SP1 setup complete dialog box will be displayed.



7. Click the **Exit** button to complete the setup process.

Microsoft .NET Framework 3.5 SP1 setup is now completed.