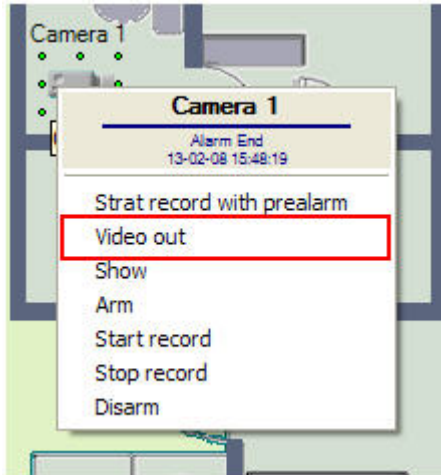


Video surveillance using an analog monitor

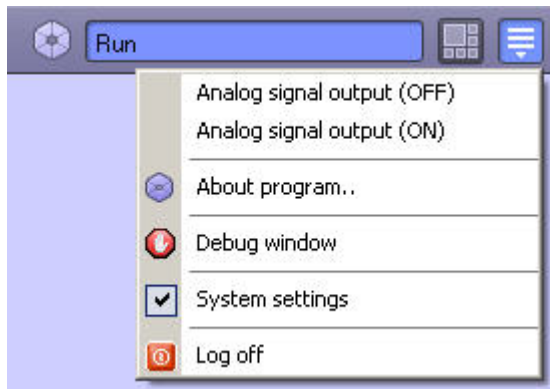
Where the program is configured in a certain way, an analog video image can be output to the external devices connected to the system (for instance, to the analog monitor).

If the program supports the above functionality, the output of the analog signal can be switched on (off) using one of the following tools:

1. Press a command in the context menu of the object on the map. To do so, use the **Video out** box (**Video in**) in the context menu of the corresponding object on the map.



2. Use a macro command to use this option, select an appropriate box in the **Run** menu of the main control panel.



Note.

The availability and names of the macro commands in the **Run** menu used to switch on and off the analog signal output to the external devices, depends on the program configuration.