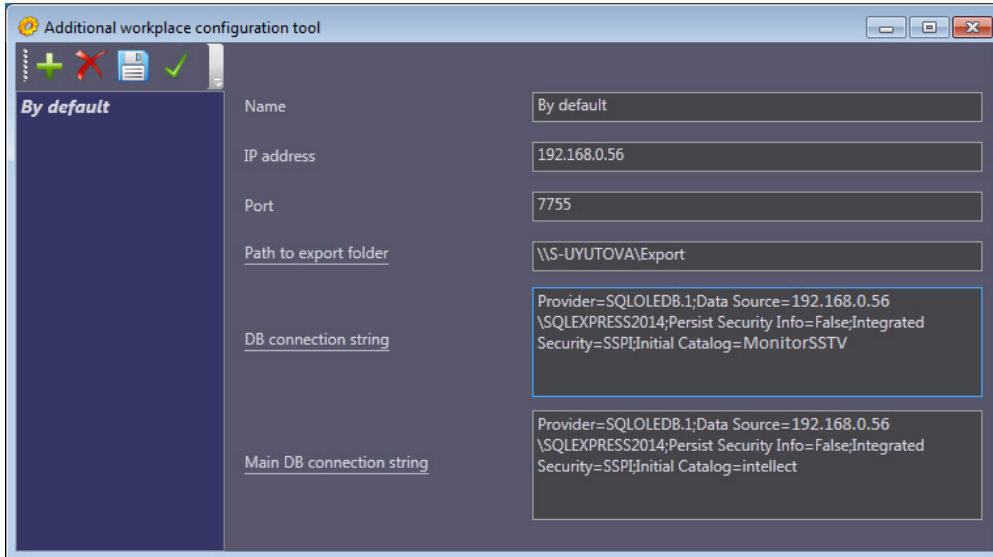


Additional workplace configuration

Additional workplace can operate with only one *ATM-Intellect Workstation* at a time. However, the list of available *ATM-Intellect Workstations* can be configured and the active *ATM-Intellect Workstation* can be selected. For this use the Additional workplace configuration tool. The tool can be run as follows:

1. Click **Start -> All Programs -> Intellect > ATMIntellect -> Additional workplace configuration tool**.
2. Use the ARMSelector.exe executable file, located in the <Intellect installation directory>\VHost\SYSTEM\ folder.

The tool is shown in the figure.



See Interface of Additional workplace configuration tool for parameters description.