



# Intellect

Telsap Integration Module Settings Guide

1. Introduction into Telsap Integration Module Settings Guide	3
2. Supported hardware and licensing of the TELSAP integration module	3
3. Configuration of the Telsap integration module	3
3.1 Configuration procedure for the Telsap integration module	3
3.2 Configure the connection of the Telsap FSA to the ACFA Intellect software package	4
3.3 Configure the Telsap Line object	4
3.4 Configure the Telsap Element object	5
4. Working with the Telsap integration module	6
4.1 General information about working with the Telsap integration module	6
4.2 Controlling the Telsap controller	7
4.3 Controlling the Telsap Line	7
4.4 Controlling the Telsap Element	7

# Introduction into Telsap Integration Module Settings Guide

## On the page:

- Purpose of the document
- General information about the Telsap integration module

## Purpose of the document

The *Telsap integration module settings guide* is a reference manual designed for *Telsap* Module configuration technicians and operators. This module functions as part of fire and security alarm system which has been built on the *ACFA Intellect* Software System.

This Guide presents the following materials:

1. general information about the *Telsap* module;
2. *Telsap* module settings;
3. working with the *Telsap* module.

## General information about the Telsap integration module

The *Telsap* integration module is part of the *FSA* system built on the basis of the *ACFA Intellect* Software System. It is designed to control and manage devices of the *Telsap* *FSA*. Configuring devices of the *Telsap* *FSA* in the *ACFA Intellect* software package is impossible.

Before start the working of the *Telsap* integration module install hardware on the secured object and configure the system in the vendor software.



### Note.

Detailed information about the Telsap can be found in the official documentation.

## Supported hardware and licensing of the TELSAP integration module

<b>Manufacturer</b>	Polon-Alfa Spółka z ograniczoną odpowiedzialnością Sp.k. ul. Glinki 155 85-861 Bydgoszcz, Poland E-mail: <a href="mailto:polonalfa@polon-alfa.com.pl">polonalfa@polon-alfa.com.pl</a> Tel: +48 52 36 39 263
<b>Integration type</b>	Low-level protocol
<b>Equipment connection</b>	RS-232

### Supported equipment

Equipment	Function	Features
Telsap 2100	Fire control panel	Zones in a group: 128 Groups: 64

### Protection

Per 1 panel

## Configuration of the Telsap integration module

### Configuration procedure for the Telsap integration module

The *Telsap* integration module is configured as follows:

1. Configure the connection of the Telsap FSA to the ACFA Intellect software package.
2. Configure the Telsap Line object.
3. Configure the Telsap Element object.

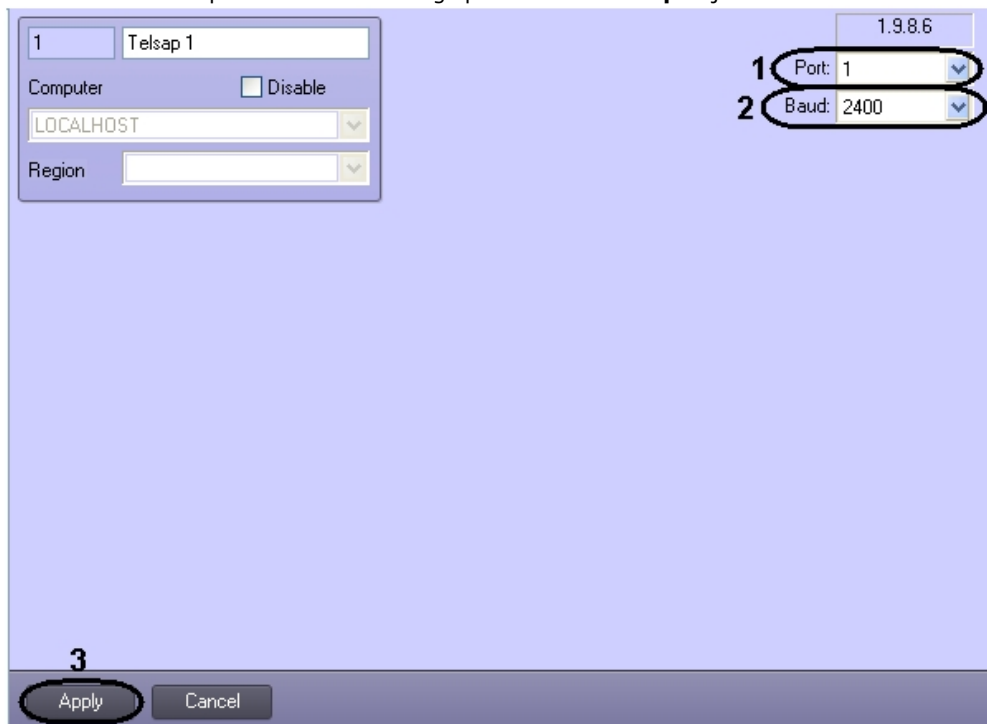
## Configure the connection of the Telsap FSA to the ACFA Intellect software package

To configure the connection of the *Telsap* FSA to the *ACFA Intellect* software package, do the following:

1. Create the **Telsap** object on the basis of the **Computer** object on the **Hardware** tab of the **System settings** dialog window.



2. Set the connection parameters on settings panel of the **Telsap** object:

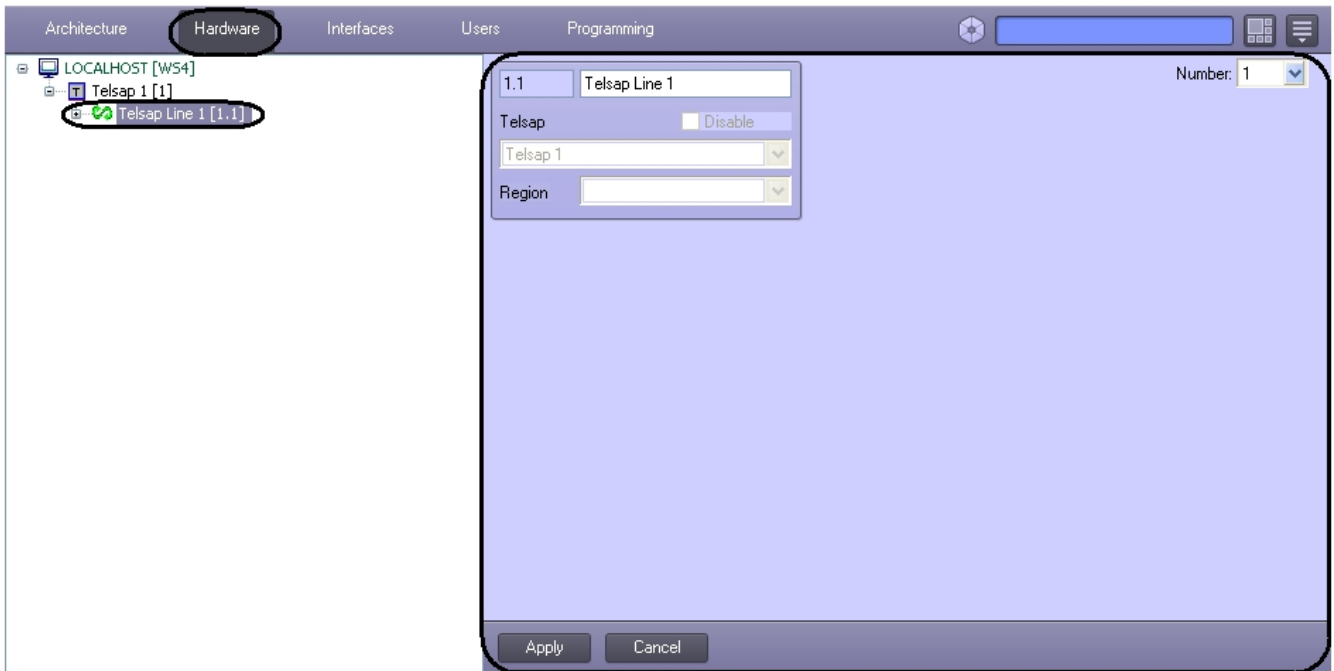


- a. From the **Port:** drop-down list select the port of connection the *Telsap* controller to the *ACFA Intellect* software package (1).
  - b. From the **Baud:** drop-down list select the speed of controller's connection (2).
3. Click the **Apply** button (3).

Configuring the connection of the *Telsap* FSA to the *ACFA Intellect* software package is completed.

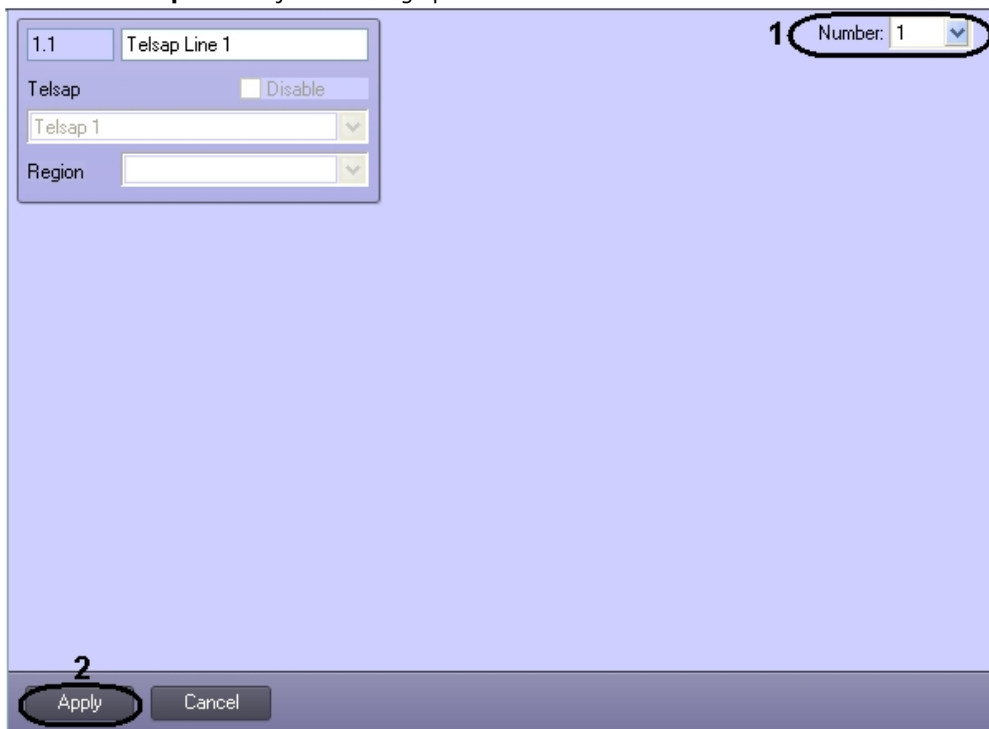
## Configure the Telsap Line object

The *Telsap Line* object is configured on the **Telsap Line** object's settings panel. This object is created on the basis of the **Telsap** object on the **Hardware** tab of the **System Settings** dialog window.



To configure the *Telsap Line* object do the following:

1. Go to the **Telsap Line** object's settings panel.



2. From the **Number:** drop-down list select the number of the line (1).
3. To save changes click the **Apply** button (2).

This completes the configuration of the **Telsap Line** object.

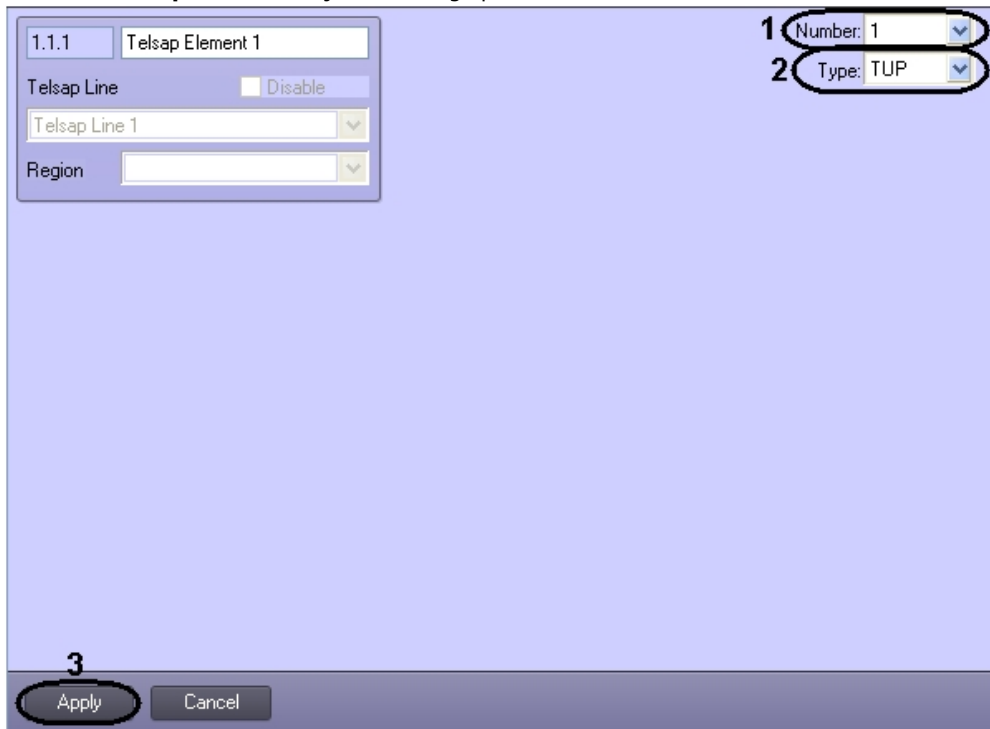
## Configure the Telsap Element object

The *Telsap Element* object is configured on the **Telsap Element** object's settings panel. This object is created on the basis of the **Telsap Line** object on the **Hardware** tab of the **System Settings** dialog window.



To configure the *Telsap Element* object do the following:

1. Go to the **Telsap Element** object's settings panel.



2. From the **Number:** drop-down list select the number of the element (1).
3. From the **Type:** drop-down list select the type of the element (2).
4. To save changes click the **Apply** button (3).

This completes the configuration of the *Telsap Element* object.

## Working with the Telsap integration module

### General information about working with the Telsap integration module

The following interface objects are used for working with *Telsap* integration module:

1. **Map;**
2. **Events protocol.**

Information about **Map** and **Events protocol** interface objects' configuration is given in the Intellect Software Package:

Working with these interface objects is given in details in [Intellect Software Package: Operator's Guide](#).

## Controlling the Telsap controller

Controlling the *Telsap* controller is carried out in **Map** interactive window using feature menu of **Telsap** object.

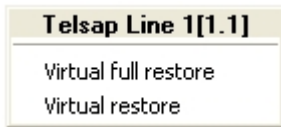


Control the Telsap controller:

Menu command	Performed function
Virtual full restore	Restore all objects
Reset	Restart the controller
Restore	Restore the controller
Virtual restore	Restore controller only in Intellect software
Virtual reset	Reset alarms only in Intellect software

## Controlling the Telsap Line

Controlling the *Telsap Line* object is carried out in **Map** interactive window using feature menu of **Telsap Line** object.

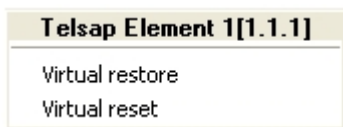


Control the Telsap Line:

Menu command	Performed function
Virtual full restore	Restore all objects
Virtual restore	Restore controller only in Intellect software

## Controlling the Telsap Element

Controlling the *Telsap Element* object is carried out in **Map** interactive window using feature menu of **Telsap Line** object.



Control the Telsap Element:

Menu command	Performed function
Virtual restore	Restore controller only in Intellect software
Virtual reset	Reset alarms only in Intellect software