



Intellect

AnsonDB Integration Module Settings Guide

| | |
|---|---|
| 1. Introduction into AnsonDB Integration Module Settings Guide | 3 |
| 2. Configuration of the AnsonDB integration module | 3 |
| 2.1 Configuration procedure for the AnsonDB integration module | 3 |
| 2.2 Configure the connection of the AnsonDB ACS to the Oracle DB Server | 3 |
| 2.3 Create objects of the AnsonDB devices | 4 |

Introduction into AnsonDB Integration Module Settings Guide

On the page:

- Purpose of the document
- General information about the AnsonDB integration module

Purpose of the document

The *AnsonDB integration module settings guide* is a reference manual designed for *AnsonDB* Module configuration technicians and operators. This module functions as part of access control system which has been built on the *ACFA Intellect* Software System.

This Guide presents the following materials:

1. general information about the *AnsonDB* module;
2. *AnsonDB* module settings;

General information about the AnsonDB integration module

The *AnsonDB* integration module is part of the *ACS* system built on the basis of the *ACFA Intellect* Software System. It is designed to monitor devices of the *AnsonDB ACS*. Configuring devices of the *AnsonDB ACS* in the *ACFA Intellect* software package is impossible.

Before start the working of the *AnsonDB* integration module install hardware on the secured object and configure the system in the Oracle DB Server.

Configuration of the AnsonDB integration module

Configuration procedure for the AnsonDB integration module

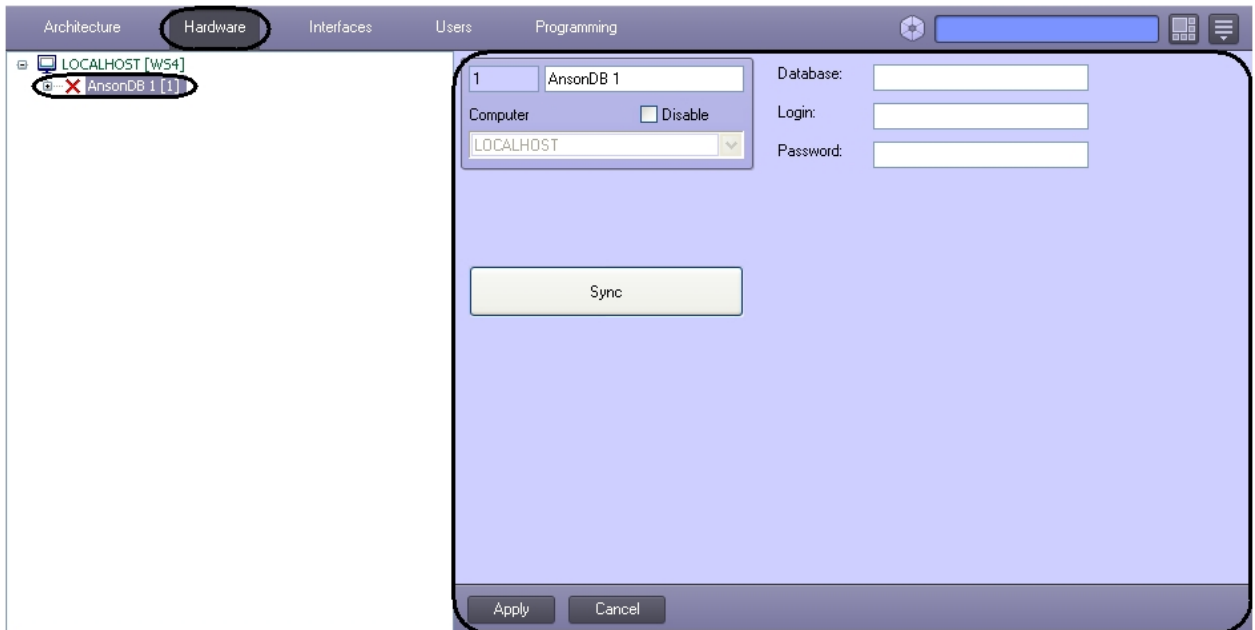
The *AnsonDB* integration module is configured as follows:

1. Configure the connection of the *AnsonDB ACS* to the *Oracle DB Server*.
2. Create objects of *AnsonDB* devices.

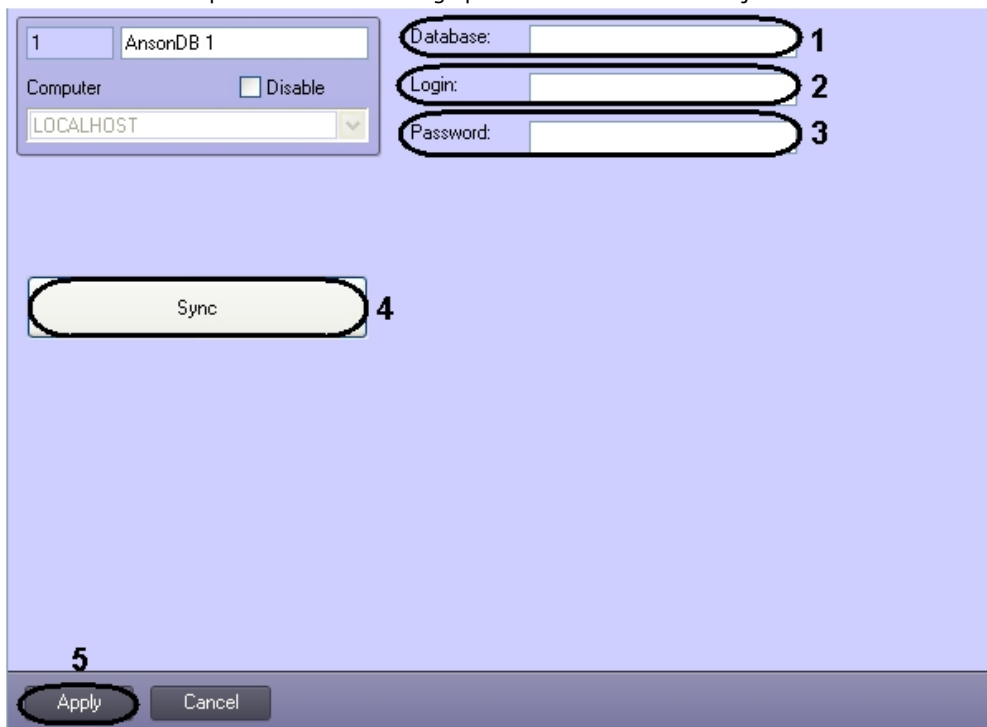
Configure the connection of the AnsonDB ACS to the Oracle DB Server

To configure the connection of the *AnsonDB ACS* to the *Oracle DB Server*, do the following:

1. Create the **AnsonDB** object on the basis of the **Computer** object on the **Hardware** tap of the **System settings** dialog window.



2. Set the connection parameters on settings panel of the **AnsonDB** object:



- a. In the **Database:** field enter the connection string to the *Oracle DB Server* (1).
 - b. In the **Login:** field enter the login of connection to the *Oracle DB Server* (2).
 - c. In the **Password:** field enter the password of connection to the *Oracle DB Server* (3).
3. Click the **Sync** button to synchronize the *Intellect* software with the *Oracle DB Server* (4).
 4. Click the **Apply** button (5).

Configuring the connection of the *Aritech FSA* to the *Oracle DB Server* is completed.

Create objects of the AnsonDB devices

The following elements of the *AnsonDB ACS* system are available in the *ACFA Intellect* software package: controllers (**AnsonDB controller** object), doors (**AnsonDB Door** object).

AnsonDB controller object is created on the basis of the **AnsonDB** object.

AnsonDB Door object is created on the basis of the **AnsonDB controller** object.

- ☐ LOCALHOST [WS4]
 - ☐ (A) AnsonDB 1 [1]
 - ☐ (A) AnsonDB controller 1.1 [1.1]
 - ☐ (A) AnsonDB Door 1.1.1 [1.1.1]